



Higher Education Course Guide 2019/20

NORTHERN
Regional College





Welcome!

Congratulations on taking the next step towards building on your education and developing your future career. You are joining the College at an exciting period of transformation as we progress through our Campus 21 development plans.

Choosing to study for a Higher Education qualification is a major decision and it is important to consider the full range of options available to you. At Northern Regional College we offer Higher Education programmes that provide you with choice and flexibility for your career and education goals.

If you aspire to university then most of our courses are recognised pathways and can be a more affordable route to an Honours degree. Our Foundation Degrees include subjects in the Built Environment, Engineering, Applied Science, Business and Computing, Childcare, Social

Care, Counselling and Sport. These courses are normally linked to degrees and typically offer exemption from part of the course.

We also have a number Higher Level Apprenticeships where you can remain in employment whilst working towards recognised higher level qualifications. Subjects currently include Accountancy, Computing, Construction and Engineering.

All of the courses in this guide have been designed to provide the knowledge and skills needed to enhance your employability and are valuable qualifications in their own right. Whether you choose to focus on your career, or continue to higher education, each course is officially accredited and recognised and will enhance your employability.

If you already know what subject you are interested in you will find more detailed information on our website, so please make sure you visit www.nrc.ac.uk to find out more.

If you are still trying to decide on what to do next please make use of the careers service we offer across our campuses. Why not come in and talk to one of our careers advisors who can discuss the options available to you? We would be delighted to see you.

I hope you find this guide useful and informative – and I look forward to welcoming you as a student of Northern Regional College in September 2019.

Professor Terri Scott

Principal & Chief Executive





Contents

- 4 Welcome to Northern Regional College
- 9 Higher Education
- 13 What is a Foundation Degree?
- 14 What is a Higher Level Apprenticeship?
- 16 What is an Honours Degree?
- 19 Qualifications and Levels
- 20 Entry Requirements
- 22 Become an Ulster University Associate
- 24 Our Campuses
- 26 Facilities
- 28 Students' Union
- 31 Supporting Students
- 32 How You Will Learn
- 35 Digital Learning
- 36 How to Apply
- 38 When to Apply
- 40 Fees and Funding
- 42 What our Students Say
- 44 Courses
- 67 Contact Us



Higher Education at Northern Regional College

At Northern Regional College you can shape the direction of your education and career. Our range of Higher Education courses gives you choice in your learning. Whether you want to jump start your career or progress to university you will find a course to suit you.

We offer Foundation Degrees, Higher Level Apprenticeships (HLAs), Higher National Diplomas (HNDs) and Degree courses and much more.



There are many benefits to studying Higher Education at Northern Regional College:

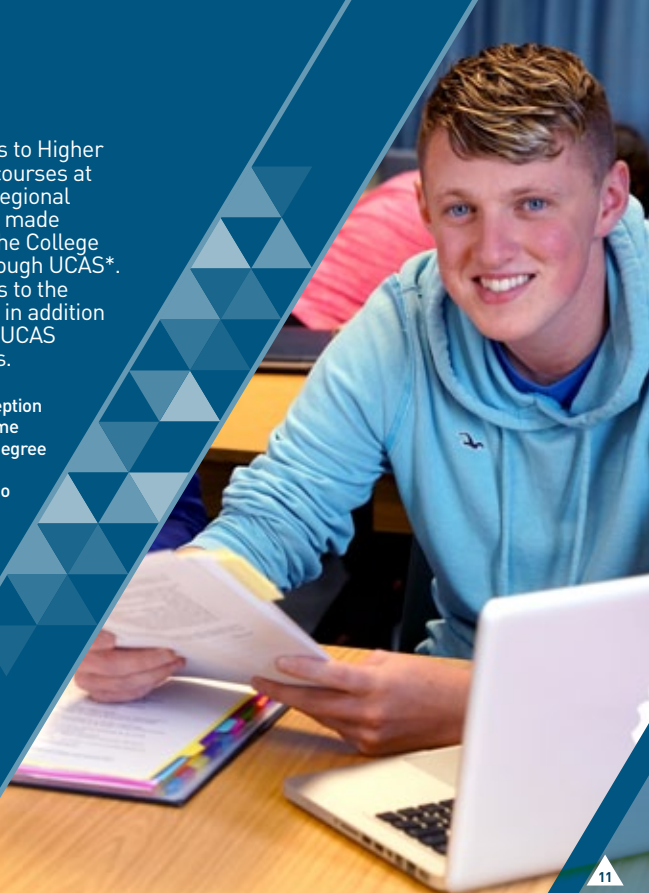
- ▶ **Affordability**
You can study closer to home to save on travel and accommodation expenses. Annual tuition fees are typically much lower than at university.
- ▶ **Lower full-time tuition fees**
Last year full-time tuition fees were no more than £2,500 per year for Higher Education courses. This fee is subject to annual increase.
- ▶ **Earn while you learn**
Foundation Degrees and Higher Level Apprenticeships let you work while you study.
- ▶ **Flexibility**
We offer students excellent levels of qualifications and pathways which can lead to university.

- ▶ **Smaller classes**
You will receive more personalised teaching in smaller classes and tutorial sessions allowing for individualised learning plans and excellent pastoral support.
- ▶ **Links with industry and employers**
We have excellent links with local, national and international employers who provide students with valuable placement opportunities, guest lectures and site visits.
- ▶ **Experience matters**
Mature students may be considered for a place based on their prior education and/or experience.

*Applicants for the BSc Honours Degree in Health and Social Care must complete the Letterkenny Institute of Technology Advanced Entry form which can be obtained online.

Applications to Higher Education courses at Northern Regional College are made directly to the College and not through UCAS*. Applications to the College are in addition to your five UCAS applications.

*With the exception of the Full-time Foundation Degree in Childhood Studies, we do not accept applications through UCAS.





What is a Foundation Degree?

A Foundation Degree comprises academic study integrated with relevant work-based learning undertaken with an employer. It is a higher education qualification at Level 5 and is validated and awarded by universities.

It can be studied full-time or part-time and is a stand-alone qualification in its own right. You may be eligible for exemption from the first year of a related degree programme at some universities.





What is a Higher Level Apprenticeship?

A Higher Level Apprenticeship (HLA) is a nationally accredited work-based programme similar to traditional apprenticeships but at a higher level (Level 5). It is designed to meet the needs of employers for higher skill levels and leads to qualifications equivalent to university level.



What is an Honours Degree?

An Honours degree is a Level 6 undergraduate qualification. It is usually a three year, full-time programme (or four if a work placement is completed). You may be able to 'top up' a Higher National Certificate (HNC), Higher National Diploma (HND) or Foundation degree through a period of additional study.





Qualifications and Levels

At Northern Regional College you can study a range of Higher Education qualifications from Level 4 to Level 6. Below are the qualification types available:

Level 4

- Level 4 Certificate
- Level 4 Diploma
- Higher National Certificate (HNC) Diploma
- Higher National Certificate (HNC)

Level 5

- Level 5 Certificate
- Level 5 Diploma
- Level 5 Higher National Certificate
- Higher National Diploma (HND)
- Foundation Degree
- Higher Level Apprenticeship

Level 6

- Level 6 Certificate
- Level 6 Diploma
- Degree with Honours (BSc Honours)



Entry Requirements

Foundation Degree

For all our courses there is a minimum UCAS Tariff requirement. Many courses will also ask for specific subjects at GCSE and/or A level or equivalent.

See website for course specific entry requirements.

Higher Level Apprenticeships (HLA)

Entry requirements may vary. See website for specific entry requirements.

You must have an appropriate employer. Companies may recruit directly for HLAs.

Level 4 – Level 6

Entry requirements may vary. See website for course specific entry requirements.

BSc Honours Degree

HNC/D subject related qualification or equivalent.

Accreditation of Prior Experiential Learning

Where mature students wish to have prior education and/or experience taken into account, in lieu of meeting the full course entry requirements, they should contact the relevant Course Director by 13 August, with the exception of Foundation Degree in Counselling where you must contact the Course Director by 1 April, as an application deadline will apply. Applicants must also refer to further details available online.





Become an Ulster University Associate

Most Foundation Degrees at Northern Regional College are validated by Ulster University. If you enrol on one of these Foundation Degrees you will become a student of the College and also an Ulster University Associate Student. As an Associate Student you can access a wide range of Ulster's resources and facilities. You will be issued with an Ulster University student card which will allow you to use their services including the library and sports centre.



Our
Campuses

Coleraine

Ballymoney

Ballymena

Magherafelt

Newtownabbey

Facilities

Libraries

Each campus has its own library with access to PCs, 35,000 printed books, over 500 e-books and 20,000 electronic journals. Dedicated library staff will support you in using the library and in finding the resources you need to succeed on your course.

Teaching Facilities

You will be taught with the equipment and facilities needed to provide you with a high quality learning experience in your subject area. Our campuses are equipped with everything from standard teaching rooms to a wide variety of specialist equipment including engineering, sports and fitness, car maintenance, graphic design and science laboratories.



Learning Online

Computers and printers are available on all campuses. You will also have access to a wide range of learning resources on and off campus via the College's Digital Learning Environment (DLE). Many subject areas deliver some teaching online giving you more flexibility in when and where you study.

Seating Areas

Comfortable seating areas are available around the campuses for meeting friends and relaxing outside of class.

Canteen

Each campus has a canteen offering a selection of affordable snacks, sandwiches and meals. Meal deals, daily specials and healthy options are available throughout the week.

Free Wi-Fi

Free Wi-Fi is available at each campus. There are also designated Wi-Fi hotspots in each library for personal devices.

Students' Union

All College students automatically become members of the Students' Union. The Union is responsible for representing the views of all students. You and your fellow students will elect someone in your class to be your representative and to feedback your views to the Students' Union and the College at various times throughout the year. The Union is run by the Student President along with the Student Leadership Team and Class Representatives. Meetings are generally campus based and held once per term.

As a member of the Students' Union, you will be able to:

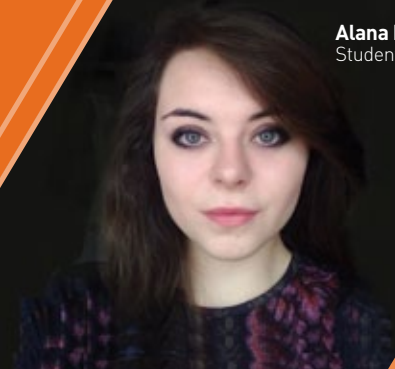
- ▶ put yourself forward for election as class representative
- ▶ vote in College elections and attend meetings
- ▶ have your opinion heard across College through your class representative (if this isn't you)
- ▶ stand for election for Students' Union Officer posts if you are a class representative
- ▶ sit on College committees as deemed appropriate by the Students' Union/ College



"My role is to listen and respond to your ideas and thoughts as well as keeping you updated on key issues that are affecting students in NI and across the UK. I look forward to welcoming you as a student at Northern Regional College.



Atana Duff
Student President





Supporting Students

Careers Advice and Guidance

Our professional careers, advice and guidance team will work with you throughout the academic year to help with career planning, job applications, interview skills and university applications such as UCAS and Central Applications Office (CAO).



Education Support

We offer comprehensive education support tailored to your specific needs in order to ensure you have the support to attend College and to succeed on your course. If you are unsure about the support we can offer, we can offer transition visits prior to starting your course which will provide a personal review of your needs.

Counselling Services

Beginning a new course can be a stressful time. There may be occasions where you may need to speak to someone outside of your course about issues affecting you. Our College counselling service is available 24 hours per day, 365 days per year and is staffed by professionally trained counsellors who you can talk to on the phone or in person. Group counselling is also available.



How you will learn

Teaching and assessment methods vary but most courses are taught through traditional lectures and practical sessions. You may be taught on campus, by eLearning, or a combination of both (blended learning).

Teaching methods may also include:

- ▶ Guest lectures from industry professionals or specialists
- ▶ One-to-one sessions with your lecturers
- ▶ Workshops
- ▶ Case studies
- ▶ Directed learning
- ▶ Independent study
- ▶ Visits e.g. to museums and exhibitions or into industry
- ▶ Productions
- ▶ Design studio work
- ▶ Laboratory work

Assessment methods may also include:

- ▶ Coursework
- ▶ Reports
- ▶ Formal examinations
- ▶ Online examinations
- ▶ Essays
- ▶ Practical exercises
- ▶ Written assignments
- ▶ Case studies
- ▶ Real-life industry projects
- ▶ Presentations
- ▶ Observation of skills

Industrial visits

We have excellent industrial links with local, national and international employers who provide students with valuable seminars, visits and placement opportunities.



Digital Learning

Teaching on many of our courses is delivered partly online and can be completed at home or on campus. We have invested heavily in online teaching facilities and computer equipment to provide our students with a high quality learning experience.

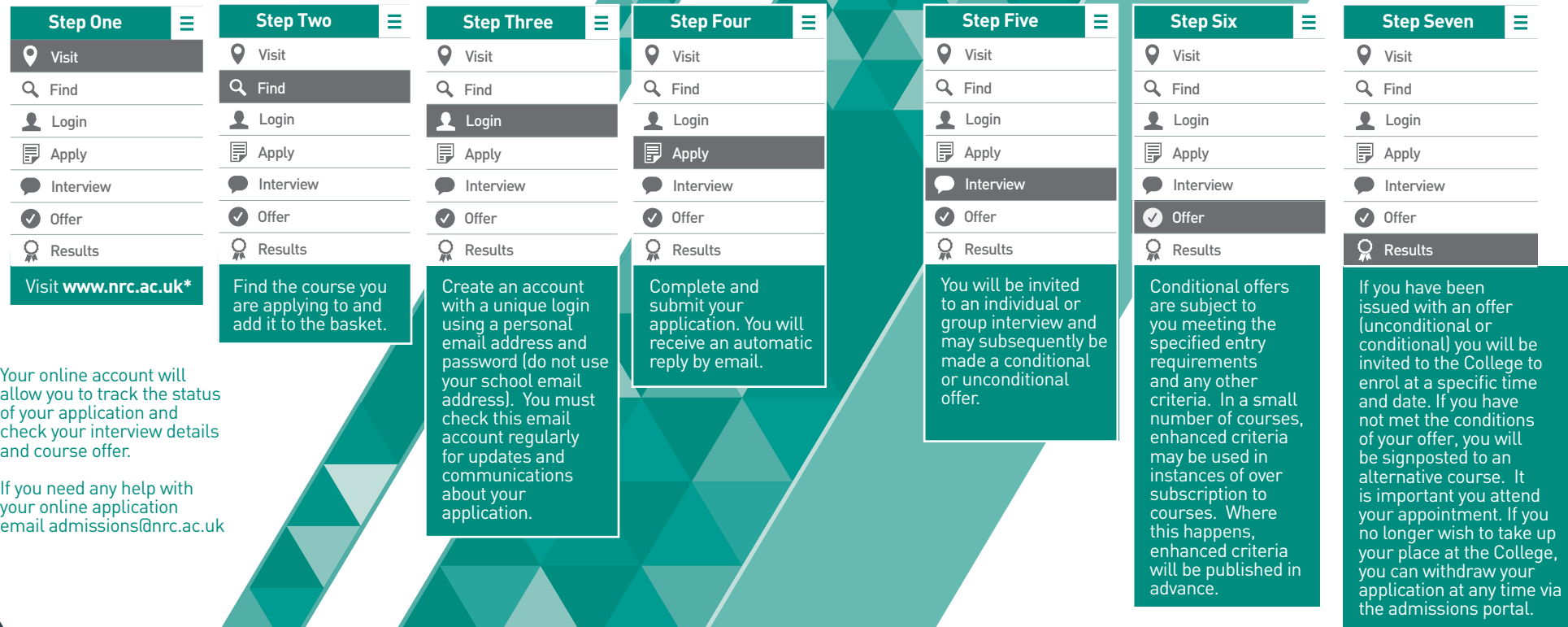
We are continually refining, expanding and enhancing our online course delivery, offering the flexibility of studying parts of your course online. This means you can:

- ▶ Access course material online 24/7
- ▶ Experience interactive and engaging online resources
- ▶ Enhance and develop your digital skills
- ▶ Balance study, work and family commitments

In addition to course materials provided by our lecturers, all students at Northern Regional College have access to thousands of online courses developed by industry experts on lynda.com.



How to Apply



Your application to Northern Regional College does not count as one of your UCAS applications. You can apply to Northern Regional College in addition to your other UCAS applications. With the exception of the Full-time Foundation Degree in Childhood Studies, we do not accept applications through UCAS.

*Applicants for the BSc Honours Degree in Health and Social Care must complete the Letterkenny Institute of Technology Advanced Entry form which can be obtained online.

When to Apply

Full-time

You can apply online NOW for September 2019 entry.

For the Foundation Degree in Childhood Studies course ONLY – you can apply online through UCAS for September 2019. The UCAS deadline, 15 January, applies for this course.

Part-time

You can apply from January for September 2019 entry.



Fees and Funding

Full-time tuition fee for 2018/2019 entry was £2,500 per year with the exception of the BSc Honours Degree in Health and Social Care which was 3,000 euros per year. These fees are subject to an annual increase. Fees for full-time and part-time Higher Education courses for 2019/2020 will be available to view online from January.

Payment options

Payment In Full

Fees may be paid in full. For full-time courses you may apply to the Student Loans Company for a tuition fee loan for payment of your fees.

Flexible Payments

To help spread the cost of your course, you can pay by direct debit instalments. You will be required to pay a 25% deposit and £10 administration fee.

For full-time students payments must be made in 3 instalments typically in December 2019; January 2020 and February 2020.

For part-time students payments must be made in 3 instalments typically in November 2019; December 2019 and January 2020.

Financial Support

Student Loan

If you are undertaking a full-time Higher Education course you may apply for help from Student Finance NI for assistance with a tuition fee loan, a maintenance loan and a maintenance grant.

Higher Education Bursary

The College Bursary Scheme provides bursaries each year. Your household income must be less than £19,203 per year and you must be in receipt of the maximum maintenance grant. There will be no limit to the number of bursaries available – if you meet the eligibility criteria you will receive one.

Higher Education

Part-time Grant

If you are undertaking a part-time Higher Education course and are studying at least 25% of an equivalent full-time course you may apply for financial help from Student Finance NI.

Access to Learning Fund

If you have availed of all finance options and are still in need of financial support, you may be eligible to apply for assistance from the Access to Learning Fund.

Our student finance team are on hand to assist you with any financial matter or to help you apply for grants or awards that are available. Where courses have additional mandatory expenses we make every effort to highlight them in the online prospectus. These may include residential visits, field trips, materials, security checks, computer equipment, uniforms, professional memberships.

For further details visit www.nrc.ac.uk.



What Our Students Say

“

Teaching and learning at the College is very good and I particularly find lecturers' industrial experience very useful. If you ask questions, lecturers are very helpful and I like how the classes are smaller than university.”

Conor Irwin,
Foundation Degree in
Mechanical Engineering

“

I find the course very engaging and enjoy the range of practical work. There is lot of self-study and as many of our lecturers are from industry backgrounds it is great to hear and experience current examples from industry in their teaching. It's a really good stepping stone to university.”

Marcus Lavery,
Foundation Degree in Computing

“

The best decision I ever made was to study the Foundation Degree at Newtownabbey. This course allows me to be creative whilst working as a team and also independently. I really enjoy working in such an open and honest environment with great lecturer support.”

Harrison Platt,
Foundation Degree in
Interactive Design

“

I would absolutely recommend the Accounting Technicians Ireland (ATI) course to others. It is much better to have a recognised qualification like ATI if you are interested in pursuing a career in accounts and you can progress from ATI to chartered accountant. It's a good pathway to an excellent professional career.”

Kathleen Lowry,
Accounting Technicians Ireland (ATI)

“

If you don't get the A level grades to go to university, look at the Foundation Degree as another option. I thought my world had ended when I didn't get the grades to progress to university but was signposted to the Foundation Degree which is another route to university. I have found this course to be a great foundation and now feel more prepared to face university.”

Megan McBurney,
Foundation Degree in Sport,
Exercise and Fitness



Courses A-Z

Guide

For full course details and up-to-date information visit www.nrc.ac.uk.



- 47 **Accountancy** (Higher Level Apprenticeship)
- 47 **Accountancy** (Level 4 Certificate)
- 47 **Advanced Automotive Studies** (Level 4)
- 48 **Applied and Medical Science** (Foundation Degree)
- 49 **Business** (HNC Diploma)
- 49 **Business Studies** (BSc Honours Degree)
- 50 **Business with Digital Technology** (Foundation Degree)
- 51 **Children's Care Learning and Development** (Leadership and Management Pathway)
- 51 **CISCO CCNA**
- 51 **Cognitive Behavioural Therapeutic Skills and Theory** (Level 5 Diploma)
- 52 **Computing** (Level 4 HNC Diploma)
- 52 **Computing** (Foundation Degree)
- 52 **Computing** (Higher Level Apprenticeship)
- 53 **Construction and the Built Environment** (Level 4 HNC)
- 53 **Construction Engineering with Surveying** (Foundation Degree)
- 54 **Construction** (Higher Level Apprenticeship)
- 54 **Counselling Studies** (Level 4 Certificate)
- 55 **Counselling** (Foundation Degree)
- 55 **Creative Media (Web & App Development Pathway)** (Level 4 HNC Certificate)
- 56 **Early Childhood Education and Care** (Level 4 Higher National Certificate)
- 56 **Early Childhood Studies** (Foundation Degree)
- 56 **Engineering** (Higher National Certificate)
- 57 **Engineering – Advanced Manufacturing** (Higher Level Apprenticeship)
- 57 **Engineering – Electrical and Electronic Engineering** (Foundation Degree)
- 57 **Engineering – Mechanical and Manufacturing Engineering** (Foundation Degree)
- 58 **Healthcare Practice** (Level 4 Higher National Certificate)
- 58 **Health and Social Care** (Foundation Degree)
- 58 **Health and Social Care** (BSc Honours Degree)
- 59 **Human Resource Practice** (Level 5 Certificate)
- 59 **Hospitality Management** (Level 4 Diploma)
- 61 **Leadership and Management** (Level 5 Certificate)
- 61 **Occupational Health and Safety** (Level 6 Diploma)
- 62 **Sport, Exercise & Fitness** (Foundation Degree)
- 62 **Support Children and Young People with Autistic Spectrum Conditions** (Level 4)
- 64 **Therapeutic Counselling** (Level 4 (CPCAB))
- 64 **Therapeutic Counselling Supervision** (Level 6 Certificate)
- 65 **Vehicle Maintenance and Repair Principles** (Level 4 Diploma)



A

Accountancy

Level

Higher Level Apprenticeship

Type	Campus	Code
Full-time	C	C01727

The Higher Level Apprenticeship in Accountancy provides an alternative route to a career in the accountancy and finance professions. This work-based course enables you to earn while you learn and gain a professional qualification equivalent to a Foundation Degree and is recognised by leading accounting bodies.

Accountancy

Level

Level 4 Certificate (Accounting Technicians Ireland)

Type	Campus	Code
Part-time	BT C M N	C01534

The Level 4 Certificate in Accounting Technicians course is designed for those who wish to pursue a formal qualification in this field. If you are involved in cash management, payroll, credit control or budgeting then this course can enhance your career prospects. Upon successful completion you can progress to Level 5.

Visit www.nrc.ac.uk for full course details

Advanced Automotive Studies

Level

Level 4 Certificate (IMI)

Type	Campus	Code
Part-time	BF	C01751

This course provides those who are experienced technicians/engineers in the automotive industry, with the opportunity to develop their knowledge of management principles, advanced vehicle technologies, liaising with manufacturers and suppliers on technical matters and undertaking diagnostic consultations with customers.

- BF** Ballymena (Farm Lodge) **B** Ballymoney **M** Magherafelt
- BT** Ballymena (Trostan Avenue) **C** Coleraine **N** Newtownabbey

Please note due to campus redevelopments at Ballymena, Ballymoney and Coleraine courses may be relocated to alternative suitable locations.

A

Applied and Medical Science*

Level

Foundation Degree
(Ulster University)

Type	Campus	Code
Full-time	N	C01976

Upon completion of this course, students will be suitable for full-time employment and/or progression to full-time and part-time degrees in related disciplines. Foundation Degree students with appropriate grades will be eligible to apply for exemption from the first year of related degree programmes at Ulster University, such as BSc Honours Biomedical Science.

*This course is currently under revalidation with Ulster University, therefore the course content and title may be subject to change.

- BF Ballymena (Farm Lodge)
 B Ballymoney
 M Magherafelt
BT Ballymena (Trostan Avenue)
 C Coleraine
 N Newtownabbey

B

Business

Level

Level 4 HNC Diploma

Type	Campus	Code
Part-time	BT C	C01996

This course covers the key knowledge, understanding and practical skills required to work and succeed in the business sector. It is designed for those who are already employed, or wish to further their career, in business or commerce.

Visit www.nrc.ac.uk for full course details

Business Studies

Level

BSc Honours Degree

Type	Campus	Code
Part-time	BT	C00143

This course is designed for students who already have a HNC/HND business related qualification. This programme equips graduates for a management career in industry, commerce or the public sector. It also provides the entrepreneurial skills necessary for new business ventures and the development of small businesses. Additionally it provides a foundation for postgraduate study and research. Students will study a range of topics including Operations Management, Total Quality Management, Managing People and Strategic Human Resource Management.

Business with Digital Technology*

Level

Foundation Degree

Type	Campus	Code
Full-time	BT N	C01494

This course is designed to meet the needs of employers and recognises the demand for strong IT skills for the growth of today's economy. A particular emphasis of this course is to prepare managers and business leaders to be able to manage and interpret information, communication and technology in business. This course is designed to produce talented business leaders with the skills and expertise to enable local businesses to compete and succeed in international markets.

*This course is currently under revalidation with Ulster University, therefore the course content and title may be subject to change.



Children's Care Learning and Development (Leadership and Management Pathway)

Level

Level 5 Diploma [City & Guilds]

Type	Campus	Code
Part-time	B N	C01928

This course meets the minimum standards for managing child care settings as set out in DHSSPS Childminding and Day-care (children under 12). It is designed to guide and assess the development of knowledge and skills relating to children's care, learning and development including leading teams and managing resources within children's and young people's settings. This qualification will confer occupational competence to work in a management role.

Visit www.nrc.ac.uk for full course details

CISCO CCNA

Type	Campus	Code
Part-time	BF	C00334

Cisco is the leading supplier of networking equipment and network management for the internet. Cisco has developed a curriculum of courses for IT professionals to educate them on networking technologies and Cisco products. The suite of CISCO CCNA courses is designed for people looking to gain professional certification which is recognised worldwide.

BF Ballymena (Farm Lodge)

BT Ballymena (Trostan Avenue)

BL Ballymena (Lamont Building)

B Ballymoney M Magherafelt

C Coleraine N Newtownabbey

Cognitive Behavioural Therapeutic Skills and Theory

Level

Level 5 Diploma [CPCAB]

Type	Campus	Code
Part-time	BL	C01949

This course is designed for those who have completed a higher level qualification in Counselling of at least 450 hours and wish to extend their knowledge of Cognitive Behavioural Therapy. The course involves a large amount of practical role plays. As part of the course applicants will carry out client work where they can apply the theory of CBT to the counselling process. Group Supervision is also a requirement of the course.

Please note due to campus redevelopments at Ballymena, Ballymoney and Coleraine courses may be relocated to alternative suitable locations

Computing

Level

Level 4 HNC Diploma

Type	Campus	Code
Part-time	M	C01738

This course provides a thorough grounding in the key concepts and practical skills required for successful careers in computing and offers a progression path to Computing Science, ICT, Interactive Media and other computing related degree courses at university. The course covers highly sought after skills including programming. Whether you are viewing this course as a direct route into employment or a stepping stone onto university, it will equip you with the skills you need.

- BF Ballymena (Farm Lodge)
 B Ballymoney
 M Magherafelt
BT Ballymena (Trostan Avenue)
 C Coleraine
 N Newtownabbey
BL Ballymena (Lamont Building)

Computing

Level

Higher Level Apprenticeship

Type	Campus	Code
Full-time	BF	C01725

The Higher Level Apprenticeship in Computing has been designed to allow students to work with an employer for four days per week and attend College one day per week to undertake a Foundation Degree in Computing, validated by Ulster University. The course covers modules in programming, using databases, web and mobile app development.

Computing*

Level

Foundation Degree (Ulster University)

Type	Campus	Code
Full-time	BF N	C01973

This course is designed to meet the needs of students and industry. It prepares students to progress directly into employment in the computing industry and provides suitably skilled employees to serve the needs of industry and the local economy. It also presents students with the knowledge and skills to progress to further study at Honours degree level at university.

*This course is currently under revalidation with Ulster University, therefore the course content and title may be subject to change.

Construction and the Built Environment

Level

Level 4 HNC

Type	Campus	Code
Part-time	BF M	C01852

This course provides a broad knowledge and awareness of key aspects of the construction and the built environment sector. The course content includes Science and Materials, Construction Information (Drawing, Detailing, Specification) and Legal and Statutory Responsibilities. There is an option to specialise in Civil Engineering at Magherafelt.

Construction Engineering with Surveying

Level

Foundation Degree (Ulster University)

Type	Campus	Code
Part-time	BF C	C01722

This course is ideal for those who wish to pursue technical and professional careers in the built environment such as Building Surveying, Quantity Surveying, Construction and Project Management and Building. It is also suitable for those already in related employment who wish to improve their qualifications. The course content includes Construction Technology, An introduction to Building Information Modelling (BIM), Computer-Aided Design (CAD), Building and Site Surveying, Building Design and the Development Process.

Please note due to campus redevelopments at Ballymena, Ballymoney and Coleraine courses may be relocated to alternative suitable locations

Construction

(Subject to Approval)

Level

Higher Level Apprenticeship

Type	Campus	Code
Full-time	BF	C01854

The Higher Level Apprenticeship in Construction is designed to provide higher level skills and experience required to cover a wide range of job roles in the construction and civil engineering sector. Students will continue working with their employers four days per week and attend College one day per week to study a HNC in Construction and the Built Environment (Construction and Civil Engineering).

Counselling Studies*

Level

Level 4 Certificate (Ulster University)

Type	Campus	Code
Part-time	A C N BL M	C00295

This course offers the skills that will be useful for those who work with people in many different contexts. The course covers three modules of study which include developing an understanding of the theories involved in working with people in a range of settings. It also examines the ways in which communication and counselling skills may be developed. Personal development is a key aspect of the three modules of the course.

* This course is currently under revalidation with Ulster University, therefore the course content and title may be subject to change.

Counselling*

Level

Foundation Degree (Ulster University)

Type	Campus	Code
Part-time	BL	C00694

The aim of this course is to expand your existing counselling skills and develop an insight into counselling theory. This course is designed for students who wish to use skills within the workplace and is automatically accredited by the National Counselling Society (NCS). Students may also apply for accreditation with BACP.

- BF Ballymena (Farm Lodge)
- BT Ballymena (Trostan Avenue)
- BL Ballymena (Lamont Building)
- B Ballymoney
- C Coleraine
- A Antrim (Parkhall Senior School)
- M Magherafelt
- N Newtownabbey

Please note due to campus redevelopments at Ballymena, Ballymoney and Coleraine courses may be relocated to alternative suitable locations

Creative Media (Web & App Development Pathway)

Level

Level 4 HNC Certificate

Type	Campus	Code
Full-time	C N	C01796

This course is designed to upskill students in digital interactive technology. Industry trained lecturing staff will deliver subjects on digital graphic design, animation, virtual and augmented reality, interaction design, digital video editing and social media content creation. Progression routes to university could include Interactive Media, Interactive Multimedia Design and Interaction Design.

Early Childhood Education and Care

Level		
Level 4 Higher National Certificate		
Type	Campus	Code
Part-time	B N	C01860

This course provides the opportunity to gain a nationally recognised qualification for those wishing to enter employment in the early years sector or for progressing to higher education qualifications such as a full-time or part-time degree in Early Years.

Early Childhood Studies

Level		
Foundation Degree (Stranmillis University)		
Type	Campus	Code (*UCAS)
Full-time	BT N	*LX53

* Applications for the full-time Foundation Degree in Early Childhood Studies must be submitted through UCAS.

This course provides you with the opportunity to develop a thorough knowledge and understanding of early years and related issues, enabling you to become a competent and well qualified early years practitioner. It will also give you a nationally recognised qualification and evidence of your ability to work in the early years sector. Additionally, you will have the opportunity to progress to year 2 of the BA Honours Early Childhood Studies course at Stranmillis University College.

Engineering

Level		
Higher National Certificate in Engineering		
Type	Campus	Code
Part-time	C N	C00361

This course provides an opportunity for aspiring and currently employed engineers or technicians to achieve a nationally recognised Level 4 qualification. Training on industry standard and specialist equipment and software will be provided.

Engineering – Advanced Manufacturing

Level		
Higher Level Apprenticeship		
Type	Campus	Code
Full-time	BF	C00940

The Higher Level Apprenticeship in Advanced Manufacturing Engineering has been designed to provide the manufacturing and engineering sector with high grade technicians and engineers who have practical skills, combined with a higher education qualification. The programme will facilitate progression from Level 3 apprenticeship and future progression to Level 6 qualifications and enable apprentices to work towards Incorporated Engineer status.

BF Ballymena (Farm Lodge) **B** Ballymoney **M** Magherafelt
BT Ballymena (Trostan Avenue) **C** Coleraine **N** Newtownabbey

Please note due to campus redevelopments at Ballymena, Ballymoney and Coleraine courses may be relocated to alternative suitable locations

Engineering – Electrical and Electronic Engineering*

Level		
Foundation Degree (Ulster University)		
Type	Campus	Code
Part-time Full-Time	BF	C01975

Upon successful completion of this course graduates will be suitable for full-time employment and/or progression to full-time and part-time degrees in related disciplines. Foundation Degree students with appropriate grades may be eligible for exemption from the first year of related degree programmes at Ulster University.

Engineering – Mechanical and Manufacturing Engineering*

Level		
Foundation Degree (Ulster University)		
Type	Campus	Code
Part-time Full-time	BF	C01974

Students successfully completing this course will be suitable for full-time employment and/or progression to full-time and part-time degrees in related disciplines. Foundation Degree students with suitable grades may be eligible for exemption from the first year of related degree programmes at Ulster University.

* This course is currently under revalidation with Ulster University, therefore the course content and title may be subject to change.

Healthcare Practice

Level

Level 4 Higher National Certificate

Type	Campus	Code
Part-time	BT C M N	C01830

This course equips students with knowledge, understanding and skills for success in employment in the health and social care sector at supervisory or management levels or as a foundation to further study at degree level. It is delivered by experienced staff who will provide a supportive and encouraging learning environment.

Health and Social Care

Level

Foundation Degree
(Ulster University)

Type	Campus	Code
Full-time	BT N	C01615

This is an innovative and contemporary course validated by Ulster University which will be attractive to both students and employers in the health and social care sector. The aim of this foundation degree is to prepare graduates with the knowledge and skills required to meet the current and future evolving needs of health and social care services.

Health and Social Care

Level

BSc Honours Degree
(Letterkenny Institute of Technology) LYIT

Type	Campus	Code
Full-time	N	C01815*

This course is delivered in partnership with Letterkenny Institute of Technology enabling those students who already obtain a Foundation Degree or HND or equivalent in Health & Social Care to top up to a degree. Entry onto the degree course will be to Year 3 of the 4 year programme. Work placement is an integral part of the course and provides students with an opportunity to learn from experience through supervised practice.

Human Resource Practice

Level

Level 5 Certificate (CIPD)

Type	Campus	Code
Part-time	BT	C01834

This course will help you develop your knowledge and skills, required by human resource professionals, to advance your career. You will increase your understanding of human resource management within the broader business environment and acquire competence in evaluating the effectiveness of various human resource models and practices.

Hospitality Management

Level

Level 4 Diploma

Type	Campus	Code
Part-time	B BT	C01820

This course provides an opportunity for those who are currently employed in the hospitality and catering sector to develop and practice the skills required in culinary management. You will be assessed using a range of different methods including examinations, coursework, presentations, case studies and project based learning.

- BF Ballymena (Farm Lodge) B Ballymoney M Magherafelt
BT Ballymena (Trostan Avenue) C Coleraine N Newtownabbey

Please note due to campus redevelopments at Ballymena, Ballymoney and Coleraine courses may be relocated to alternative suitable locations

* Applicants for this course must complete the Letterkenny Institute of Technology Advanced Entry form which can be obtained online.





Leadership and Management

Level

Level 5 Certificate (ILM)

Type	Campus	Code
Part-time	BT N	C01389

The ILM Level 5 Certificate in Leadership and Management aims to equip aspiring and practicing middle managers with knowledge and skills which will enable them to more effectively carry out their role.

O

Occupational Health and Safety

Level

Level 6 Diploma (NEBOSH)

Type	Campus	Code
Part-time	N	C00323

This course aims to provide people from a wide range of industries with the necessary technical, managerial, analytical and personal skills to advise, develop and operate health and safety policies and procedures within organisational structures.

Sport, Exercise and Fitness*

Level

Foundation Degree
(Ulster University)

Type	Campus	Code
Full-time	C	C00121

This course provides training and qualifications to students interested in a career in sports, exercise and fitness. It is designed in collaboration with Ulster University to allow direct progression to university, subject to meeting entry requirements.

* This course is currently under revalidation with Ulster University, therefore the course content and title may be subject to change.

- BF** Ballymena (Farm Lodge)
- BT** Ballymena (Trostan Avenue)
- M** Magherafelt
- B** Ballymoney
- C** Coleraine
- N** Newtownabbey

Please note due to campus redevelopments at Ballymena, Ballymoney and Coleraine courses may be relocated to alternative suitable locations

Support Children and Young People with Autistic Spectrum Conditions

Level

Level 4

Type	Campus	Code
Part-time	B N	C01440

This course is suitable for those supporting children and young people in a professional capacity, such as in a school or nursery environment.



Please note due to campus redevelopments at Ballymena, Ballymoney and Coleraine courses may be relocated to alternative suitable locations

Therapeutic Counselling

Level

Level 4 (CPCAB)

Type	Campus	Code
Part-time	BL	C01500

This course is designed to provide applicants with the knowledge, skills and competencies to become a therapeutic counsellor within a counselling agency in both health care and non-medical settings.

- BF Ballymena (Farm Lodge)
- BT Ballymena (Trostan Avenue)
- BL Ballymena (Lamont Building)
- B Ballymoney
- C Coleraine
- M Magherafelt
- N Newtownabbey

Therapeutic Counselling Supervision

Level

Level 6 Certificate (CPCAB)

Type	Campus	Code
Part-time	BL	C01950

This course is designed for applicants who have completed a higher level qualification in Counselling of at least 450 hours plus 450 clinical hours and have at least two years' supervised clinical practice. The main aspects of the course deal with: (1) The supervisor relationship. (2) Working ethically in the role of a supervisor. (3) Culture and diversity issues that impinge on the supervisor relationship. (4) Agency settings and their role in supervision.

Visit www.nrc.ac.uk for full course details

Vehicle Maintenance and Repair Principles

Level

Level 4 Diploma (IMIAL)

Type	Campus	Code
Part-time	BF	C01285

This course is designed to progress the skills of Automotive Technicians already competent at Level 3, to Master Technician status, by developing their ability to determine solutions to a variety of unpredictable problems.

- BF Ballymena (Farm Lodge)
- BT Ballymena (Trostan Avenue)
- B Ballymoney
- C Coleraine
- M Magherafelt
- N Newtownabbey

Please note due to campus redevelopments at Ballymena, Ballymoney and Coleraine courses may be relocated to alternative suitable locations



Visit www.nrc.ac.uk for full course details

Contact Us

Enquiries

Website:
www.nrc.ac.uk

Email:
admissions@nrc.ac.uk



Disclaimer

Whilst the College makes every effort to ensure the accuracy of this publication, it reserves the right to alter, add or remove any of the courses, or parts thereof, or any other matters of information referred to in this guide or any other literature, without prior notice.

Please note that the College's website is the most up-to-date source of information regarding courses and fees and we strongly recommend that you always visit the website before making any commitments.

All courses are subject to minimum enrolment numbers.

If you require this document in an alternative format please contact equality@nrc.ac.uk.





NORTHERN
Regional College
www.nrc.ac.uk