

[illegible]

## For Learners in Care or Leaving Care

# Getting Support

Designated contacts can help put together your individual support package and help you deal with any problems.

## Designated Contacts

You may find it difficult to let us know that you are, or have been in care. This is understandable and you will not want to be treated differently because of your past circumstances.

As a College we would like to assure you that your information will only be shared with the designated contact for your campus and this is to ensure that we target your individual support to your personal needs.

Decisions to disclose information to any other person will only be taken with your permission.

## Libraries

Contains all the resources and help you need to complete your coursework.

## Counselling Service

Contact via reception or via your personal lecturer for all personal concerns.

## Careers Advisor

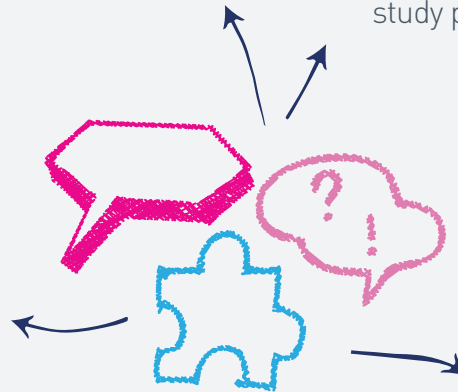
Careers Advisors are available to discuss all your plans for employment, training and Higher Education.

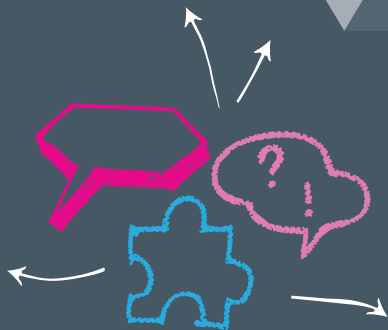
## Working Together for a Better Future

College life can be challenging whatever your background and especially for learners in care or leaving care.

At Northern Regional College, we recognise that all learners are individuals. We can offer tailored support to meet your individual needs.

Contact our designated staff at your chosen campus to discuss your needs, arrange a visit with your care worker or to chat informally about your study plans.





## **Campus Contact Information**

**Newtownabbey**

T: 028 9085 5000

**Ballymena**

T: 028 2563 6253

**Ballymoney / Coleraine / Magherafelt**

T: 028 7034 0148

E: [educationsupport@nrc.ac.uk](mailto:educationsupport@nrc.ac.uk)

