



**NORTHERN**  
Regional College

**Course Guide**  
(Level 1 to 3)  
**2019/20**





## Welcome

Congratulations on taking the next step towards building on your education and developing your future career. You are joining the College at an exciting period of transformation as we progress through our Campus 21 development plans.

We have carefully selected each of the courses listed in this guide as programmes that offer real value to our students and are relevant to the needs of employers or to progression within education. Whether you are a recent school leaver, or you are returning to study after time away, this guide summarises the excellent opportunities available across our six campuses.

Whilst at the College you will most closely interact with our professional teaching staff. All of our lecturers have specialist expertise in their subject areas and many continue to work as professionals in industry. This connection with industry is important to us and as a College we work closely with businesses to ensure our provision is relevant and reflects the needs of employers. No matter what subject or qualification you choose, your course will be geared towards helping you to enhance your career prospects.

If you already know what subject you are interested in you will find more detailed information on our website, so please make sure you visit [www.nrc.ac.uk](http://www.nrc.ac.uk) to find out more.

If you are still trying to decide on what to do next please make use of the careers service we offer across our campuses. Why not come in and talk to one of our careers advisors who can discuss the options available to you? We would be delighted to see you.

I hope you find this guide useful and informative – and I look forward to welcoming you as student of Northern Regional College in September 2019.

**Professor Terri Scott**  
Principal & Chief Executive





## Contents

4	<b>Welcome</b>
7	<b>Contents</b>
9	<b>Study at Northern Regional College</b>
13	<b>Open Days</b>
15	<b>Our Campuses</b>
16	<b>Facilities</b>
19	<b>Students' Union</b>
20	<b>Supporting Students</b>
22	<b>How You Will Learn</b>
25	<b>Digital Learning</b>
26	<b>Qualifications</b>
28	<b>Guide to Qualifications and Levels</b>
31	<b>How to Apply</b>
34	<b>Fees and Funding</b>
39	<b>Entry Requirements</b>
41	<b>What Our Students Say</b>
45	<b>Courses</b>
46	<b>Antrim, CAFRE (Greenmount Campus)</b>
48	<b>Ballymena (Trostan Avenue)</b>
52	<b>Ballymena (Farm Lodge)</b>
56	<b>Ballymoney</b>
60	<b>Coleraine</b>
64	<b>Magherafelt</b>
68	<b>Newtownabbey</b>



## Study at Northern Regional College

At Northern Regional College you can shape the direction of your education and career. Our range of qualifications and wide selection of subject areas gives you choice in your learning. Whether you want to work towards a trade or progress to university you will find a course for your needs.

We offer Training/Apprenticeships, GCSE equivalent courses (Level 2 BTEC Diploma), A Level equivalent courses (Level 3 BTEC Extended Diploma) and Access to University courses.

### Excellent quality of teaching and learning

Many of our lecturers continue to work as industry professionals and offer extensive knowledge and experience of their specialist area.

### Practical work-based structure

All courses are designed to provide you with the skills required to meet the needs of employers.

\*For details of our Training/Apprenticeships visit our website or collect a Work-based learning course guide from any campus reception.

## Financial Support

You may be eligible for a travel pass or other financial support such as EMA (Education Maintenance Allowance), hardship payments, childcare assistance. Student Finance staff are available to advise you on other types of financial support you could access while at the College.

See website for details.

## Modern equipment and facilities

All subject areas are delivered with the latest equipment and facilities to meet industry standards.

## Progression

Our courses offer excellent progression routes. Qualifications are available from Level 1 through to Level 6 (Higher Education), all within the College. You can move onto more advanced qualifications in the same subject or into new areas.

## Excellent industry links

The College has excellent links with local, national and international employers who provide students with valuable placement opportunities, guest lectures and site visits.





## Open Days

Open Days are a great opportunity to visit your local campus, speak to our friendly staff and find out more about our courses and facilities.

### Ballymena

(Farm Lodge\*)

Wednesday 6 February 2019

4pm – 8pm

### Ballymoney

Thursday 7 February 2019

4pm – 8pm

### Coleraine

Monday 4 February 2019

4pm – 8pm

### Magherafelt

Tuesday 5 February 2019

4pm – 8pm

### Newtownabbey

Wednesday 6 February 2019

4pm – 8pm

### All Campuses

Saturday 9 February 2019

10am -1pm

\*Advice will be available on all courses on offer at both Farm Lodge and Trostan Avenue on this day/evening at Farm Lodge.





## Our Campuses

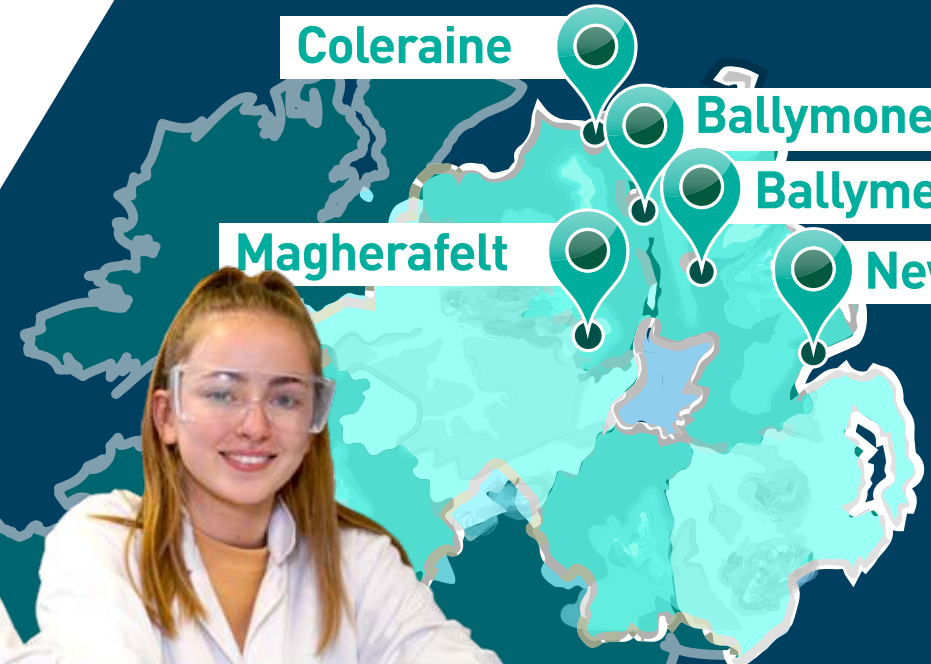
Coleraine

Ballymoney

Ballymena

Magherafelt

Newtownabbey





## Facilities

### Libraries

Each campus has its own library with access to PCs, 35,000 printed books, over 500 e-books and 20,000 electronic journals. Dedicated library staff will support you in using the library and in finding the resources you need to succeed on your course.



### Teaching Facilities

You will be taught with the equipment and facilities needed to provide you with a high quality learning experience in your subject area. Our campuses are equipped with everything from standard teaching rooms to a wide variety of specialist equipment including engineering, sports and fitness, car maintenance, beauty, graphic design and science laboratories.

### Learning Online

Computers and printers are available on all campuses. You will also have access to a wide range of learning resources on and off campus via the College's Digital Learning Environment (DLE). Many subject areas deliver some teaching online giving you more flexibility in when and where you study.

### Canteen

Each campus has a canteen offering a selection of affordable snacks, sandwiches and meals. Meal deals, daily specials and healthy options are available throughout the week.

### Seating Areas

Comfortable seating areas are available around the campuses for meeting friends and relaxing outside of class.

### Free Wi-Fi

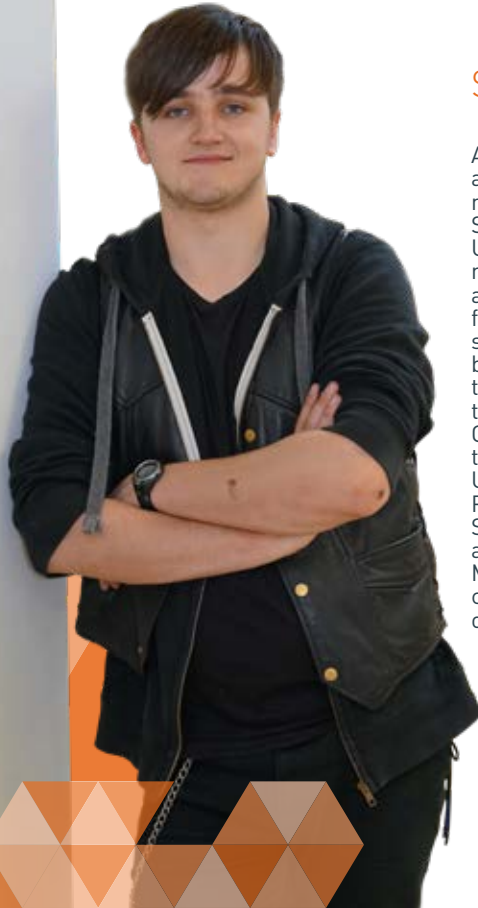
Free Wi-Fi is available at each campus. There are also designated Wi-Fi hotspots in each library for personal devices.



“My role is to listen and respond to your ideas and thoughts as well as keeping you updated on key issues that are affecting students in NI and across the UK. I look forward to welcoming you as a student at Northern Regional College.



**Alana Duff**  
Student President



## Students' Union

All College students automatically become members of the Students' Union. The Union is responsible for representing the views of all students. You and your fellow students will elect someone in your class to be your representative and to feedback your views to the Students' Union and the College at various times throughout the year. The Union is run by the Student President along with the Student Leadership Team and Class Representatives. Meetings are generally campus based and held once per term.

**As a member of the Students' Union, you will be able to:**

- ▷ put yourself forward for election as class representative
- ▷ vote in College elections and attend meetings
- ▷ have your opinion heard across College through your class representative (if this isn't you)

- ▷ stand for election for Students' Union Officer posts if you are a class representative
- ▷ sit on College committees as deemed appropriate by the Students' Union/College



## Supporting Students

### Careers Advice and Guidance

Our professional careers advice team will work with you throughout the academic year to help with career planning, job applications, interview skills and university applications such as UCAS and Central Applications Office (CAO).



### Education Support

We offer comprehensive education support tailored to your specific needs in order to ensure you have the support to attend College and to succeed on your course. If you are unsure about the support we can offer, we can offer transition visits prior to starting your course which will provide a personal review of your needs.

### Counselling Services

Beginning a new course can be a stressful time. There may be occasions where you may need to speak to someone outside of your course about issues affecting you. Our College counselling service is available 24 hours per day, 365 days per year and is staffed by professionally trained counsellors who you can talk to on the phone or in person. Group counselling is also available.



## How you will learn

Teaching and assessment methods vary but most courses are taught through traditional lectures and practical sessions. You may be taught on campus, by eLearning, or a combination of both (blended learning).

### Teaching methods may include:

- ▷ Guest lectures from industry professionals or specialists
- ▷ One-to-one sessions with your tutor
- ▷ Workshops
- ▷ Case studies
- ▷ Directed learning
- ▷ Independent study
- ▷ Visits e.g. to museums and exhibitions or into industry
- ▷ Productions
- ▷ Design studio work
- ▷ Laboratory work

### Assessment methods may include:

- ▷ Formal examinations
- ▷ Practical exercises
- ▷ Coursework
- ▷ Online examinations
- ▷ Written assignments
- ▷ Reports
- ▷ Essays
- ▷ Case studies
- ▷ Reports
- ▷ Observation of skills
- ▷ Real-life industry projects
- ▷ Presentations

### Industrial Visits

We have excellent industrial links with local, national and international employers who provide you with valuable seminars, visits and placement opportunities.





## Digital Learning

On many of our courses teaching is delivered partly online and can be completed at home or on campus. We have invested heavily in online teaching facilities and computer equipment to provide our students with a high quality learning experience.

We are continually refining, expanding and enhancing our online course delivery, offering the flexibility of studying parts of your course online. This means you can:

- ▶ Access course material online 24/7
- ▶ Experience interactive and engaging online programmes
- ▶ Enhance and develop your digital skills
- ▶ Balance study, work and family commitments

In addition to course materials provided by our lecturers, all students at Northern Regional College have access to thousands of online courses developed by industry experts on lynda.com.





## Qualifications

### Access to University





-  Studied over 1 year, full-time
-  A modularised course which is set at A level standard.







### Level 3 BTEC/Cambridge Extended Diploma (A Levels equivalent)

-  Equivalent to 3 A Levels
-  Studied over 2 years, full-time
-  Practical work related course
-  Provides progression to Higher Education courses at Colleges and/or universities.




### Level 3 BTEC Subsidiary Diploma

-  Equivalent to 1 A Level
-  Studied over 1 year, full-time
-  Practical work-related course
-  Successful students automatically progress to the second year of the Level 3 BTEC Extended Diploma.

### Level 3 BTEC 90 Credit Diploma

-  Equivalent to 1.5 A Levels
-  Studied over 1 year, full-time
-  Practical work-related course
-  Successful students automatically progress to the second year of the Level 3 BTEC Extended Diploma.

### Level 2 BTEC Diploma (GCSE equivalent)

-  Equivalent to 4 GCSEs at Grade C or above
-  Studied 1 year, full-time
-  Provides progressions to Level 3 course.

For details of our Training/Apprenticeships visit our website or collect a Work-based learning course guide from any campus reception.

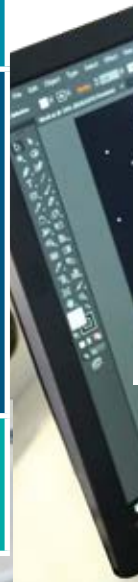


## Guide to Qualifications and Levels

Action	What do you need?	What can you study?	What can you do next?
Level 5	<ul style="list-style-type: none"> <li>No entry level qualifications, other than a willingness to learn</li> </ul>	<ul style="list-style-type: none"> <li>Entry Level Award</li> <li>Essential Skills</li> <li>Skills for Working Life</li> </ul>	<ul style="list-style-type: none"> <li>Employment</li> <li>Further Training</li> <li>Level 1 Course</li> </ul>
Level 1	<ul style="list-style-type: none"> <li>Three GCSEs at Grade E or above</li> </ul>	<ul style="list-style-type: none"> <li>BTEC Introductory Diploma</li> <li>BTEC Foundation First Certificate</li> <li>City &amp; Guilds Level 1</li> <li>Entry to Employment (e2e)</li> <li>NVQ Level 1</li> <li>Foundation Diploma</li> </ul>	<ul style="list-style-type: none"> <li>Employment</li> <li>Further Training</li> <li>Level 2 course</li> </ul>
Level 2	<ul style="list-style-type: none"> <li>Four GCSEs at Grade D or above</li> </ul>	<ul style="list-style-type: none"> <li>BTEC Level 2 Diploma</li> <li>City &amp; Guilds Level 2</li> <li>NVQ Level 2</li> </ul>	<ul style="list-style-type: none"> <li>Employment</li> <li>Further Training</li> <li>Level 3 course</li> </ul>

\* Although students would have to display evidence of maturity and the ability to benefit from the course. Students are advised that this course is best suited to the needs of adults and mature students. Applicants will be assessed to ensure they have sufficient literacy and numeracy skills, but we do advise checking with universities to see if GCSEs are required. Please note that every effort has been taken to ensure that this course guide was correct at the time it was printed. However, whilst every effort is made to run all of the courses in this course guide, the college reserves the right to review or cancel courses if they prove to be non-viable for any reason which lies outside its control.

Action	What do you need?	What can you study?	What can you do next?
Level 3	<ul style="list-style-type: none"> <li>Four or five GCSEs at Grade C or above normally including Maths and English</li> <li>Six GCSEs at Grade C or above normally including Maths and English</li> </ul>	<ul style="list-style-type: none"> <li>Access to Higher Education*</li> <li>BTEC 90 Credit/ Extended Diploma</li> <li>City &amp; Guilds Level 3</li> <li>NVQ Level 3</li> <li>A Levels</li> </ul>	<ul style="list-style-type: none"> <li>Employment</li> <li>Further Training</li> <li>Higher Education</li> <li>Level 4-5 course</li> <li>Higher Level Apprenticeship</li> </ul>
Level 4	Level 4 and 5 are Higher Education level courses. See our Higher Education course guide or view courses online for further details.		
Level 5			





## How to Apply

You can apply online NOW for September 2019 entry.

Applications are made through our website

**[www.nrc.ac.uk](http://www.nrc.ac.uk)**

follow these steps:

### Step One

Visit

Find

Login

Apply

Information Event

Offer

Results

Visit **[www.nrc.ac.uk](http://www.nrc.ac.uk)**

### Step Two

Visit

Find

Login

Apply

Information Event

Offer

Results

Find the course you are applying to and add it to the basket.



### Step Three



Visit

Find

Login

Apply

Information Event

Offer

Results

Create an account with a unique login using a personal email address and password (do not use your school email address). You must check this email account regularly for updates and communications about your application.

### Step Four



Visit

Find

Login

Apply

Information Event

Offer

Results

Complete and submit your application. You will receive an automatic reply by email.

### Step Five



Visit

Find

Login

Apply

Information Event

Offer

Results

You will be invited to attend an information event. It is essential you check your personal email account on a regular basis as this will be the only method of communication; alternatively you can login to the admissions portal to check details.

### Step Six



Visit

Find

Login

Apply

Information Event

Offer

Results

Applicants who attend an information event may be made a conditional offer based on meeting the entry criteria of the course. In a small number of courses, enhanced criteria may be used in instances of over subscription to courses. Where this occurs, enhanced criteria will be published in advance.

### Step Seven



Visit

Find

Login

Apply

Information Event

Offer

Results

If you have been issued with an offer (unconditional or conditional) you will be invited to the College to enrol at a specific time and date. If you have not met the conditions of your offer, you will be signposted to an alternative course. It is important you attend your appointment. If you no longer wish to take up your place at the College, you can withdraw your application at any time via the admissions portal.

If you need any help with your online application email [admissions@nrc.ac.uk](mailto:admissions@nrc.ac.uk)

## Fees and Funding

The College has a dedicated Student Finance team who can provide you with support and assistance with applying for funding to support your studies and in accessing any additional College funds.

Where courses have additional mandatory expenses we make every effort to highlight them in the online prospectus. These may include uniforms, kits, IrishFA registration, residential visits, field trips, materials, security checks, computer equipment.

**For further information contact Student Finance on 028 9085 5048 or 028 2563 6230.**

## EMA

For Further Education students aged between 16 and 19. This award is means-tested on household income and students may receive payment of £30 per week.

## Travel Pass

Students must be aged 19 or younger on 1 July and on a full-time Further Education course to apply for a Travel Pass or travel allowance. Other criteria and age restrictions may apply and you should contact the Education Authority for further information.



## Further Education Award

Students must be 19 or older on 1 July. This is a means tested award for full-time students and usually has a closing date. Early application is recommended. Other criteria and age restrictions may apply and you should contact the Education Authority for further information.

## Access to Learning Fund

Students must be 18 or older at the start of the academic year. Assistance is means tested and students must have applied to all other sources of finance that are available to them in the first instance. This fund is administered by the College. Application criteria are available on request.

## Care to Learn Scheme

If you have care of a child then you may be able to get help with childcare and travel costs. You must be aged between 16 and 19 at the start of the course. This fund is administered by the College.

## Childcare Assistance

Help with childcare costs may be available to both further and higher education students through Student Finance NI.

## Other Sources of Help

There may be other sources of support available to you, such as free school meals, or the Disabled Student Allowance. Please refer to our website for further details.





## Entry Requirements

### Level 1 Diploma

No formal entry requirements.

### Level 2 BTEC Diploma

4 GCSEs Grade D-G or above, or equivalent.\*

### Level 3 BTEC 90 Credit Diploma/ Subsidiary Diploma/ Extended Diploma

4 GCSEs at Grade C or above, or equivalent\*

### Access to University

Must normally be 19 years of age or over at the date of entry to the course. Must provide evidence of basic competence in written, oral communication and numeracy skills. Students are asked to undertake a short, written assessment.

### Accreditation of Prior Experiential Learning

Where mature students wish to have prior education and/or experience taken into account, in lieu of meeting the full course entry requirements, they should contact the relevant Course Director by 13 August, as an application deadline will apply. Applicants must also refer to further details available online.

\*Some courses may vary. **Check our website for the specific entry requirements for each course.**



## What Our Students Say

“I went back to school after GCSEs and began A levels in Spanish, English Literature and ICT but very quickly realised there was a lot of ‘unnecessary stress’ associated with A levels. As I really enjoyed sport I joined the course, Level 3 Diploma in Sport and Exercise Science, as this was my opportunity to study something I have a strong passion for. The topics covered were all interesting and which transformed learning into an enjoyable experience instead of a chore and the lecturers were all incredibly friendly and very helpful. I really enjoyed my two years at the College and feel I benefited enormously from the experienced staff. The skills and knowledge I developed throughout the course will help me achieve my dream of becoming a teacher.”



**Calum MacKenzie**  
Level 3 Sport & Exercise Science

“I did 9 GCSEs at school so was always having to switch my focus between the different subjects but everything we did as part of the Level 3 Diploma was related to Travel and Tourism which was great. Within the course there was a lot of practical projects and assessed coursework and a major bonus is there are no exams or results to worry about. I’d definitely recommend it to anyone thinking of a career in travel and tourism.”



**Andrea Craig**  
Level 3 Travel & Tourism

“I was interested in a career in Computing so started to look around at other options when I didn’t get the A Level results I was hoping for. The Level 3 Diploma in IT really appealed because it included a lot of interesting modules such as Object Oriented Programming and Database Design. Having now completed my course, specialising in Software Development, I have joined Kainos as a Junior Software Engineer and will work with the company four days a week and the other day will be spent studying for a degree part-time at

Ulster University. As a Kainos employee, I will also receive a salary, all staff benefits and they will also pay my university tuition fees – a package worth up to £100,000.



**Thomas Boyle**  
Level 3 Information  
Technology



Ryan is now studying a degree in Early Childhood Studies at Stranmillis University College, Belfast and plans to follow this up with a teaching qualification to fulfil his ambition of becoming a primary school teacher.

“After my GCSEs, I thought about going back to school to do A levels but the idea of doing a vocational course interested me more. I prefer coursework to exams and since the Level 3 Diploma is 100% assessed, it was ideal for me. The Level 3 Childcare course really prepared me for university

as it helped develop my research and analytical skills. Another big bonus was work placements, I had to complete 800 hours of placement across different settings working with children with special needs and with children from 0-8 years old. Work placements gave me a good understanding of how theory applies to practice.



**Ryan McAuley**  
Level 3 Children Care  
Learning & Development



## Courses

For full course details and up-to-date information visit [www.nrc.ac.uk](http://www.nrc.ac.uk).

## Antrim, CAFRE, Greenmount Campus



Subject	Level	Duration	Code
Antrim, CAFRE, Greenmount Campus			
Sport (Golf Specialism)	Level 3	2 Years	C01288 ONF1A

Visit [www.nrc.ac.uk](http://www.nrc.ac.uk) for full course details



**Ballymena**  
(Trostan Avenue)



Subject	Level	Duration	Code
<b>Ballymena</b> (Trostan Avenue)			
Access Diploma in Social Sciences	Level 3	1 Year	C01665 TAF1A
Art and Design	Level 3	1 Year	C01240 TAF1A
Aspire2Work	Inclusive Learning	1 Year	C00723 TAF1A
Barbering	Level 2	1 Year	C01715 TAF1A
Beauty Therapy	Level 2	1 Year	C01831 TAF1A
Beauty Therapy Techniques	Level 3	1 Year	C01832 TAF1A
Business Administration	Level 3	1 Year	C01029 TAF1A
Business with Digital Technologies	Level 2	1 Year	C01673 TAF1A
Business	Level 3	2 Years	C01028 TAF1A
Children's Care, Learning and Development	Level 2	1 Year	C01920 TAF1A
Children's Care, Learning and Development	Level 3	2 Years	C00068 TAF1A



new

new

Subject	Level	Duration	Code
<b>Ballymena</b> (Trostan Avenue)			
Creative Media Production	Level 3	2 Years	C01061 TAF1A
Fashion with Art & Design *	Level 3	1 Year	C01879 TAF1A
Hairdressing	Level 2	2 Years	C01714 TAF1A
Hairdressing	Level 3	1 Year	C01800 TAF1A
Health and Social Care	Level 2	1 Year	C01934 TAF1A
Health and Social Care	Level 3	2 Years	C01032 TAF1A
Healthy Living	Level 2	1 Year	C01710 TAF1A
Industrial Art & Design *	Level 3	1 Year	C01879 TAF1B
Professional Cookery (Introduction)	Level 1	1 Year	C01041 TAF1A
Professional Cookery	Level 2	1 Year	C01568 TAF1A
Route2Work	Inclusive Learning	1 Year	C01243 TAF1A

\*Subject to approval

Visit [www.nrc.ac.uk](http://www.nrc.ac.uk) for full course details

## Ballymena (Farm Lodge)





Subject	Level	Duration	Code
<b>Ballymena</b> (Farm Lodge)			
<b>Applied Science (Medical Science)</b>	Level 3	2 Years	C01093 FLF1A
<b>College Connect</b>	Level 1	1 Year	C01850 FLF1A
<b>Construction and the Built Environment</b>	Level 3	2 Years	C01120 FLF1A
<b>Engineering</b>	Level 3	2 Years	C01080 FLF1A
<b>Information and Creative Technology</b>	Level 2	1 Year	C01347 FLF1A
<b>IT</b>	Level 3	2 Years	C01213 FLF1A
<b>Public Services</b>	Level 3	2 Years	C01402 FLF1A
<b>Sport</b>	Level 2	1 Year	C01600 FLF1A
<b>Sport (Irish FA specialism option)</b>	Level 3	2 Years	C01288 FLF1A
<b>Travel &amp; Tourism (with Aviation)</b>	Level 3	2 Years	C01403 FLF1A

# Ballymoney





Subject	Level	Duration	Code
<b>Ballymoney</b>			
Access Diploma in Social Sciences	Level 3	1 Year	C01665 BMF1A
Access to Opportunity	Level 2	1 Year	C01409 BMF1A
Animal Care	Level 2	1 Year	C01172 BMF1A
Animal Management	Level 3	2 Years	C01788 BMF1A
Animation & Visual Effects	Level 3	2 Years	C01062 BMF1B
Aspire2Work	Inclusive Learning	1 Year	C00723 BMF1A
Barbering	Level 2	1 Year	C01715 BMF1A
Beauty Therapy	Level 2	1 Year	C01831 BMF1A
Beauty Therapy Techniques	Level 3	1 Year	C01832 BMF1A

Subject	Level	Duration	Code
<b>Ballymoney</b>			
Business with Digital Technologies	Level 2	1 Year	C01673 BMF1A
Children's Care, Learning and Development	Level 2	1 Year	C01920 BMF1A
Children's Care, Learning and Development	Level 3	2 Years	C00068 BMF1A
Creative Digital Media Production	Level 2	1 Year	C01515 BMF1A
Creative Media Production, Interactive Media	Level 3	2 Years	C01062 BMF1A
Creative Media Production, TV & Film	Level 3	2 Years	C01142 BMF1A

Subject	Level	Duration	Code
<b>Ballymoney</b>			
Hairdressing	Level 2	2 Years	C01714 BMF1A
Music Technology	Level 3	2 Years	C01586 BMF1B
Performing Arts	Level 3	2 Years	C01586 BMF1A
Professional Cookery (Introduction)	Level 1	1 Year	C01041 BMF1A
Professional Cookery	Level 2	1 Year	C01568 BMF1A
Professional Cookery (Preparation and Cooking)	Level 3	1 Year	C01106 BMF1A
Route2Work	Inclusive Learning	1 Year	C01243 BMF1A
Transition 2College	Inclusive Learning	1 Year	C01840 BMF1A

Visit [www.nrc.ac.uk](http://www.nrc.ac.uk) for full course details

## Coleraine





Subject	Level	Duration	Code
<b>Coleraine</b>			
<b>Access Diploma in Social Sciences</b>	Level 3	1 Year	C01665 CRF1A
<b>Applied Science</b>	Level 3	2 Years	C01093 CRF1A
<b>Business</b>	Level 3	2 Years	C01028 CRF1A
<b>Construction and the Built Environment</b>	Level 3	2 Years	C01120 CRF1A
<b>Digital Games Development</b>	Level 3	2 Years	C01062 CRF1A
<b>Engineering (Manufacturing Engineering)</b>	Level 2	1 Year	C01472 CRF1A
<b>Engineering</b>	Level 3	2 years	C01080 CRF1A
<b>Health and Social Care</b>	Level 2	1 Year	C01934 CRF1A
<b>Health and Social Care</b>	Level 3	2 Years	C01032 CRF1A

Subject	Level	Duration	Code
<b>Coleraine</b>			
<b>Information and Creative Technology</b>	Level 2	1 Year	C01347 CRF1A
<b>IT</b>	Level 3	2 Years	C01213 CRF1A
<b>Sport</b>	Level 2	1 Year	C01600 CRF1A
<b>Sport and Exercise Sciences</b>	Level 3	2 Years	C01290 CRF1A
<b>Sport (Irish FA specialism option)</b>	Level 3	2 Years	C01288 CRF1A
<b>Travel and Tourism with Aviation</b>	Level 2	1 Year	C01582 CRF1A
<b>Travel and Tourism with WorldHost &amp; Aviation</b>	Level 3	2 Years	C01403 CRF1A

Visit [www.nrc.ac.uk](http://www.nrc.ac.uk) for full course details



## Magherafelt



Subject	Level	Duration	Code
<b>Magherafelt</b>			
<b>Access Diploma in Social Sciences</b>	Level 3	1 Year	C01665 MCF1A
<b>Aspire2Work</b>	Inclusive Learning	1 Year	C00723 MCF1A
<b>Barbering</b>	Level 3	1 Year	C01814 MCF1A
<b>Beauty Therapy</b>	Level 2	1 Year	C01831 MCF1A
<b>Beauty Therapy (Massage)</b>	Level 3	1 Year	C01833 MCF1A
<b>Business with Digital Technologies</b>	Level 2	1 Year	C01673 MCF1A
<b>Business</b>	Level 3	2 Years	C01028 MCF1A
<b>Children's Care, Learning and Development</b>	Level 2	1 Year	C01920 MCF1A
<b>Children's Care, Learning and Development</b>	Level 3	2 Years	C00068 MCF1A
<b>Engineering (Manufacturing Engineering)</b>	Level 2	1 Year	C01472 MCF1A



Subject	Level	Duration	Code
<b>Magherafelt</b>			
<b>Engineering</b>	Level 3	2 Years	C01080 MCF1A
<b>Hairdressing</b>	Level 2	2 Years	C01714 MCF1A
<b>Health and Social Care</b>	Level 2	1 Year	C01934 MCF1A
<b>Health and Social Care</b>	Level 3	2 Years	C01032 MCF1A
<b>Information and Creative Technology</b>	Level 2	1 Year	C01347 MCF1A
<b>IT</b>	Level 3	2 Years	C01213 MCF1A
<b>Route2Work</b>	Inclusive Learning	1 Year	C01243 MCF1A
<b>Sport (Irish FA/ GAA specialism option)</b>	Level 3	2 Years	C01288 MCF1A
<b>Travel and Tourism</b>	Level 3	2 Years	C01403 MCF1A
<b>Transition 2Work</b>	Inclusive Learning	1 Year	C01720 MCF1A

Visit [www.nrc.ac.uk](http://www.nrc.ac.uk) for full course details

## Newtownabbey



Subject	Level	Duration	Code
<b>Newtownabbey</b>			
<b>Access Diploma in Social Sciences</b>	Level 3	1 Year	C01665 CRF1A
<b>Animal Care</b>	Level 2	1 Year	C01172 NAF1A
<b>Animal Management</b>	Level 3	2 Years	C01788 NAF1A
<b>Animation &amp; Visual Effects</b>	Level 3	2 Years	C01062 NAF1B
<b>Applied Science</b>	Level 2	1 Year	C01486 NAF1A
<b>Applied Science (Forensics)</b>	Level 3	2 Years	C01903 NAF1A
<b>Aspire2Work</b>	Inclusive Learning	1 Year	C00723 NAF1A
<b>Beauty Therapy</b>	Level 2	1 Year	C01831 NAF1A
<b>Beauty Therapy (Massage)</b>	Level 3	1 Year	C01833 NAF1A

Subject	Level	Duration	Code
<b>Newtownabbey</b>			
<b>Business with Digital Technologies</b>	Level 2	1 Year	C01673 NAF1A
<b>Business</b>	Level 3	2 Years	C01028 NAF1A
<b>Childcare</b>	Level 1	1 Year	C01425 NAF1A
<b>Children's Care, Learning and Development</b>	Level 2	1 Year	C01920 NAF1A
<b>Children's Care, Learning and Development</b>	Level 3	1 Year	C01921 NAF1A
<b>Children's Care, Learning and Development</b>	Level 3	2 Years	C00068 NAF1A
<b>College Connect</b>	Level 1	1 Year	C01850 NAF1A
<b>Creative Digital Media Production</b>	Level 2	1 Year	C01515 NAF1A



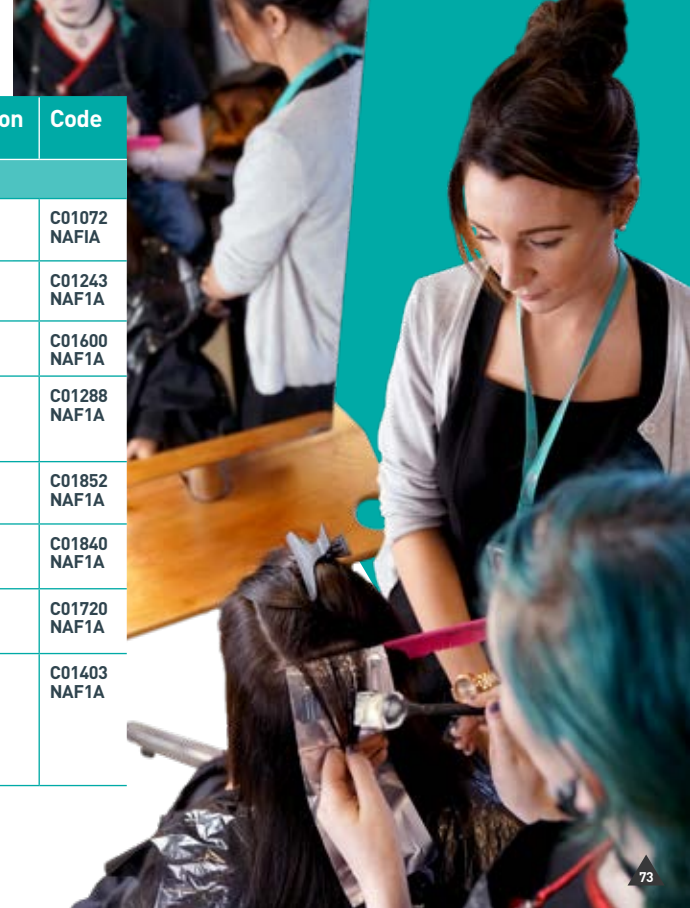
Visit [www.nrc.ac.uk](http://www.nrc.ac.uk) for full course details



Subject (by Campus)	Level	Duration	Code
<b>Newtownabbey</b>			
<b>Creative Media Production, Interactive Media</b>	Level 3	2 Years	<b>C01062 NAF1A</b>
<b>Digital Games Development</b>	Level 3	2 Years	<b>C01062 NAF1C</b>
<b>Engineering</b>	Level 3	2 Years	<b>C01080 NAF1A</b>
<b>Hairdressing</b>	Level 2	2 Years	<b>C01714 NAF1A</b>
<b>Health and Social Care</b>	Level 2	1 Year	<b>C01934 NAF1A</b>
<b>Health and Social Care</b>	Level 3	2 Years	<b>C01032 NAF1A</b>
<b>Information and Creative Technology</b>	Level 2	1 Year	<b>C01347 NAF1A</b>
<b>IT</b>	Level 3	2 Years	<b>C01213 NAF1A</b>
<b>Performing Arts</b>	Level 2	1 Year	<b>C00776 NAF1A</b>

Subject (by Campus)	Level	Duration	Code
<b>Newtownabbey</b>			
<b>Performing Arts</b>	Level 3	2 Years	<b>C01072 NAF1A</b>
<b>Route2Work</b>	Inclusive Learning	1 Year	<b>C01243 NAF1A</b>
<b>Sport</b>	Level 2	1 Year	<b>C01600 NAF1A</b>
<b>Sport (Irish FA specialism option)</b>	Level 3	2 Years	<b>C01288 NAF1A</b>
<b>Tourism and Aviation</b>	Level 2	1 Year	<b>C01852 NAF1A</b>
<b>Transition 2College</b>	Inclusive Learning	1 Year	<b>C01840 NAF1A</b>
<b>Transition 2Work</b>	Inclusive Learning	1 Year	<b>C01720 NAF1A</b>
<b>Travel and Tourism (with Aviation) WorldHost &amp; Social Media</b>	Level 3	2 Years	<b>C01403 NAF1A</b>

Visit [www.nrc.ac.uk](http://www.nrc.ac.uk) for full course details





## Contact Us

### Enquiries

Website:  
[www.nrc.ac.uk](http://www.nrc.ac.uk)

Email:  
[admissions@nrc.ac.uk](mailto:admissions@nrc.ac.uk)



### Disclaimer

Whilst the College makes every effort to ensure the accuracy of this publication, it reserves the right to alter, add or remove any of the courses, or parts thereof, or any other matters of information referred to in this guide or any other literature, without prior notice.

Please note that the College's website is the most up-to-date source of information regarding courses and fees and we strongly recommend that you always visit the website before making any commitments.

All courses are subject to minimum enrolment numbers.

If you require this document in an alternative format please contact [equality@nrc.ac.uk](mailto:equality@nrc.ac.uk).

**SKILLS**  
TO SUCCEED

The image features a collage of four people against a teal and blue geometric background. In the foreground, a smiling male chef in a white uniform and blue striped apron stands next to a smiling female student in a white chef's uniform and hairnet. Behind them, a male student with glasses points at a computer monitor while another student in a green hoodie looks on. The text 'NORTHERN Regional College' and the website 'www.nrc.ac.uk' is positioned in the top right corner.

**NORTHERN**  
Regional College

[www.nrc.ac.uk](http://www.nrc.ac.uk)